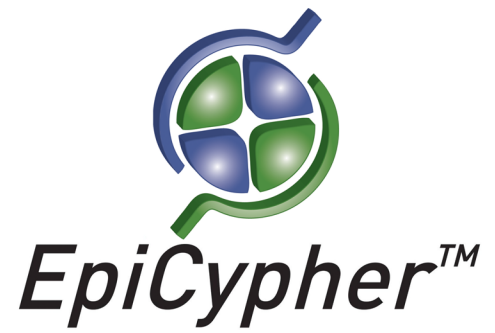


SETD6, Recombinant Human

Catalog No. 15-1004
Lot No. 13140001
Pack Size 50 µg



Type HMT **Expressed In** *E. coli*
Mol. Wgt. 72 kDa **Epitope Tag** GST

Product Description:

Recombinant full-length human SETD6 protein (SET6, accession Q8TBK2, amino acids 1-473), containing an N-terminal GST tag, expressed in *E. coli*. SETD6 is a SET-domain containing protein lysine methyltransferase, catalyzing the mono-methylation of RelA (p65, NFκB3) at lysine 310. Methylation of RelA attenuates RelA-dependant transcriptional pathways, including inflammatory responses in primary immune cells. SETD6 is downregulated in a diseases of hyper inflammation.

Formulation:

Recombinant GST-SETD6 (2.2 µg/µl) 100 mM Tris pH 8.0, 10mM glutathione and 25% glycerol.

Storage and Stability:

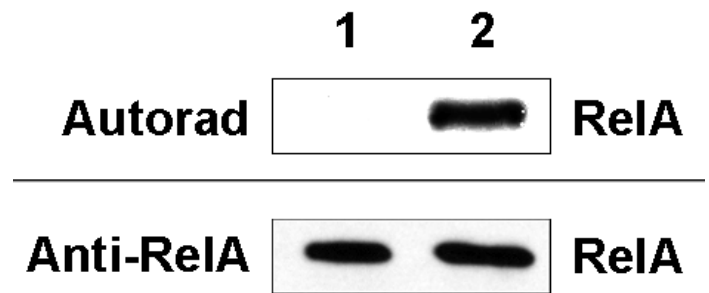
Stable for six months at -80°C from date of receipt. For best results, aliquot and avoid multiple freeze/thaws.

Application Notes:

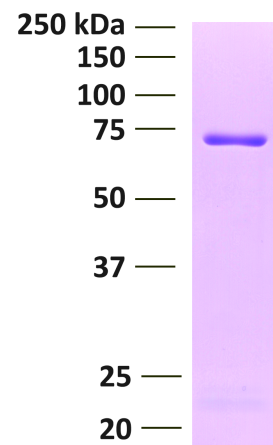
Recombinant SETD6, human is useful for RelA/p65 methylation experiments, enzyme kinetics and inhibitor screening. Use of 2-5 µg SETD6 per reaction with 1 µg recombinant RelA as a substrate is recommended.

References:

Levy D et al (2011). *Nat Immunol* 12: 29-36.



Enzyme Activity Data: Recombinant SETD6, human (4 µg) was used in a methylation assay with 1 µg recombinant RelA and radioactive SAM and the reaction was run on a PAGE gel. **Lane 1:** GST control. **Lane 2:** GST-SETD6. **Top panel:** Autoradiograph. **Bottom Panel:** RelA immunoblot.



Protein Gel Data: Recombinant SETD6, human (1 µg) run on a PAGE gel and stained with Coomassie blue. Migration and molecular weight of protein standards is indicated.

This product is for *in vitro* research use only and is not intended for use in humans or animals.