

Histone H4 K8Ac Antibody

Catalog No. 13-0021
Lot No. 15225001
Pack Size 100 µg

Type Polyclonal **Host** Rabbit
Mol. Wgt. 10 kDa **Reactivity** H, M, WR
Format Aff. Pur. IgG **Appl.** CHIP, IF, IHC, IP, WB

Product Description:

Histone H4 is one of the four proteins that are present in the nucleosome, the basic repeating unit subunit of chromatin, consisting of 147 base pairs of DNA wrapped around an octamer of core histone proteins (H2A, H2B, H3 and H4). Acetylation of H4 lysine 8 (by CBP and p300 in mammals) is associated with transcriptional activation.

Immunogen:

Synthetic peptide corresponding to a region of human histone H4 acetylated at lysine 8.

Formulation:

Affinity-purified IgG (1 mg/ml) in PBS, pH 7.3, with 0.02% sodium azide and 50% glycerol.

Storage and Stability:

Stable for 2 years at -20°C from date of receipt.

Application Notes:

Recommended dilutions:

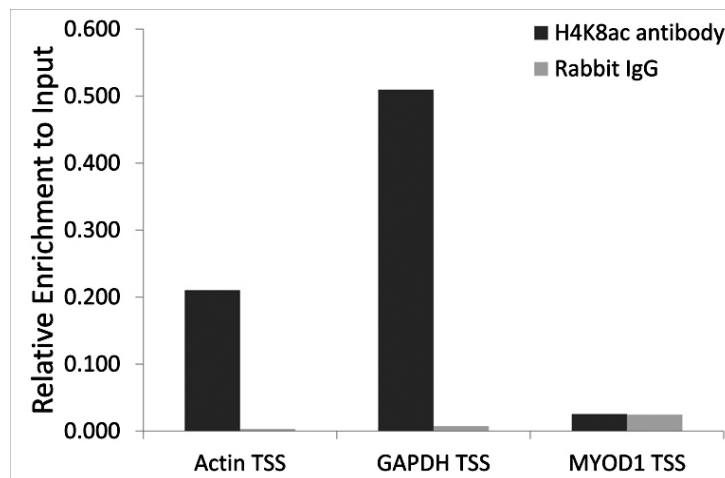
ChIP 2-5 µg per ChIP
IF 1:50 - 1:200
IHC 1:50 - 1:200
WB 1:500 - 1:3,000

References Using this Product:

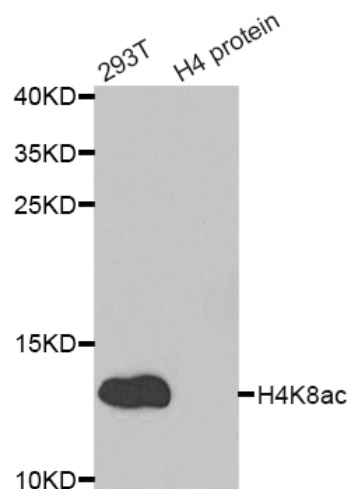
Applications Key: ChIP-Chromatin IP; E-ELISA; FACS-Flow cytometry; IF-Immunofluorescence; IHC-Immunohistochemistry; IP-Immunoprecipitation; WB-Western Blotting

Reactivity Key: B-Bovine; Ce-*C. elegans*; Ch-Chicken; Dm-*Drosophila*; Eu-Eukaryote; H-Human; M-Mouse; Ma-Mammal; R-Rat; Sc-*S.cerevesiae*; Sp-*S. pombe*; WR-Wide Range (predicted); X-Xenopus; Z-Zebrafish

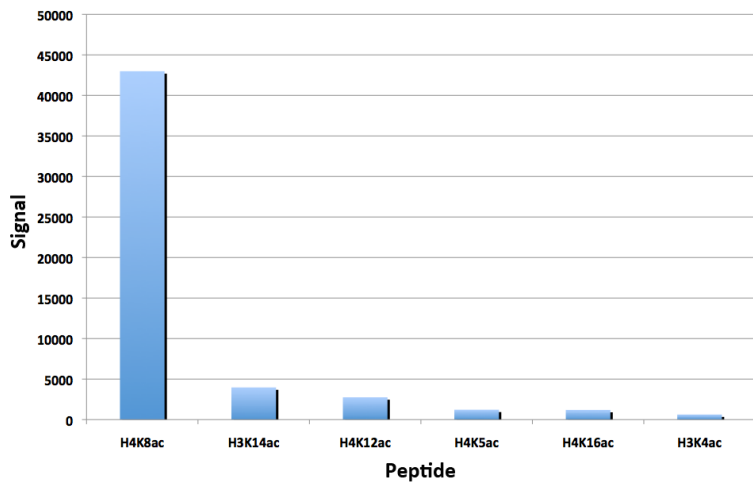
This product is for *in vitro* research use only and is not intended for use in humans or animals.



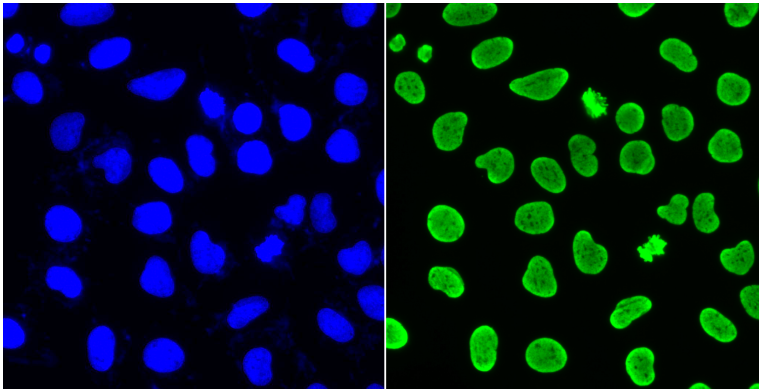
Chromatin IP Data: Chromatin IP (ChIP) performed on HeLa cell chromatin using Histone H4 K8Ac Antibody (black bars) or rabbit IgG (grey bars) as a negative control. Real time, quantitative PCR (RT-qPCR) was performed on DNA purified from each of the ChIP reactions using a primers specific for the gene indicated. Data are presented as ratios relative to input DNA in ChIP chromatin.



Western Blot Data: Whole cell extract from HEK293T cells and recombinant histone H4 were blotted onto PVDF and probed with Histone H4 K8Ac Antibody.



Specificity Data-Peptide Array: EpiTitan™ Histone Peptide array used to confirm the specificity of Histone H4 K8Ac Antibody. Data is shown for the highest reacting single or double modification peptides.



Immunofluorescence Data: HeLa cells stained with DAPI (blue, left) or Histone H4 K8Ac antibody (green, right).