

Histone H3R8me2s Antibody



EpiCypher®

Catalog No. 13-0019

Lot No. 19351002-29

Pack Size 100 µg

Type Polyclonal **Host** Rabbit
Target Size 15 kDa **Reactivity** H, M, WR
Format Aff. Pur. IgG **Appl.** IF, IHC, IP, WB, L

Product Description:

Histone H3 is one of the four proteins that are present in the nucleosome, the basic repeating unit subunit of chromatin, consisting of 147 base pairs of DNA wrapped around an octamer of core histone proteins (H2A, H2B, H3 and H4). Symmetric dimethylation of arginine 8 by PRMT5 is associated with transcriptional repression and elevated in lymphoid cancer cells.

Immunogen:

Synthetic peptide corresponding to a region of human histone H3 symmetrically dimethylated at arginine 8.

Formulation:

Affinity-purified IgG (0.81 mg/ml) in PBS, pH 7.3, with 0.02% sodium azide and 50% glycerol.

Storage and Stability:

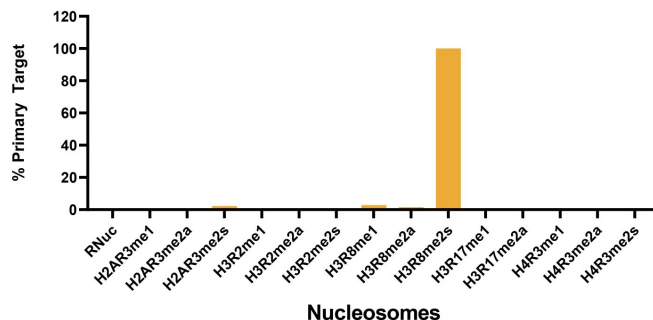
Stable for 2 years at -20°C from date of receipt.

Application Notes:

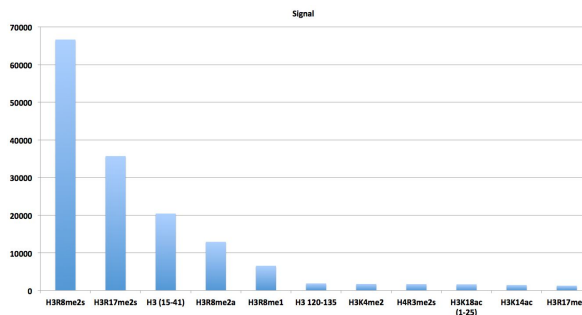
Recommended dilutions:

IF/IHC: 1:50 - 1:200
IP: 2-5 µg per IP
WB: 1:500 - 1:2,000
L: 1:1000

References:



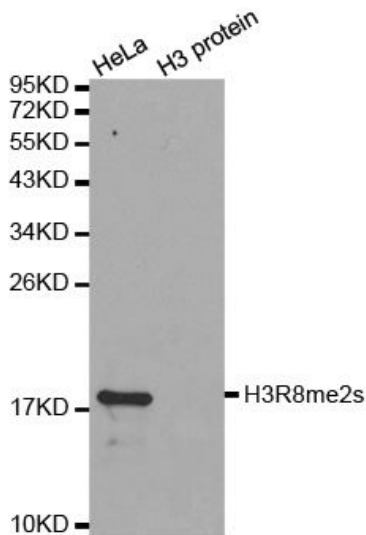
Luminex Data: Histone H3R8me2s antibody was assessed using a Luminex® based approach employing dCypher™ Nucleosome R-MetStat Panel (EpiCypher Catalog No. 16-9004). The panel comprises biotinylated designer nucleosomes (X-Axis) individually coupled to uniquely identifiable Luminex Magplex® beads. Antibody binding to nucleosomes were tested in multiplex (24-plex) at a 1:1000 dilution, and detected with second layer anti-IgG*PE. Data was generated using a Luminex FlexMAP3D®. Data normalized to relevant on-target (H3R8me2s; set to 100) is shown.



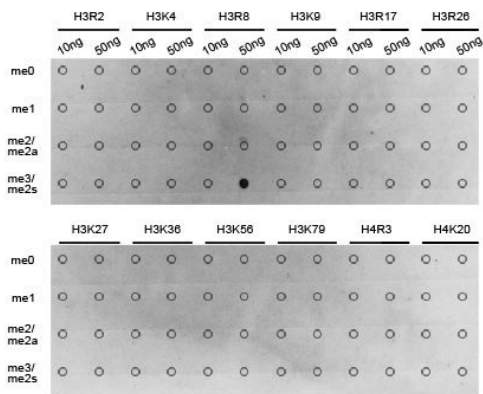
Specificity Data-Peptide Array: EpiTitan™ Histone Peptide array used to confirm the specificity of Histone H3R8me2s Antibody. Data is shown for the highest reacting single modification peptides.

Applications Key: ChIP-Chromatin IP; ChIP-seq: Chromatin IP sequencing E-ELISA; FACS-Flow cytometry; IF-Immunofluorescence; IHC-Immunohistochemistry; ICC-Immunocytochemistry; IP-Immunoprecipitation; WB-Western Blotting; L-Luminex

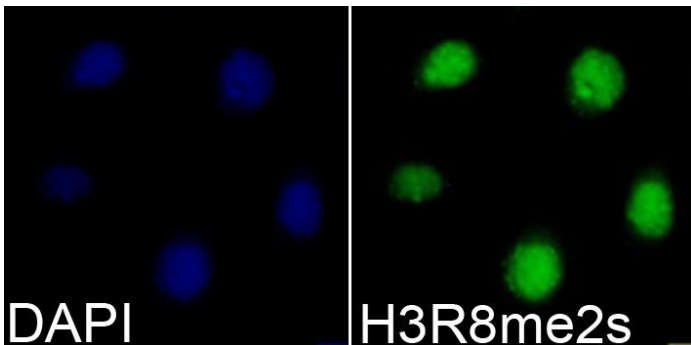
Reactivity Key: B-Bovine; Ce-*C. elegans*; Ch-Chicken; Dm-*Drosophila*; Eu-Eukaryote; H-Human; M-Mouse; Ma-Mammal; R-Rat; Sc-*S.cerevesiae*; Sp-*S. pombe*; WR-Wide Range (predicted); X-Xenopus; Z-Zebrafish



Western Blot Data: HeLa cell extract (HeLa) and recombinant histone H3 (H3 protein) were blotted onto PVDF and probed with Histone H3R8me2s Antibody.



Specificity Data-Dot Blot: Peptide dot blot used to confirm the specificity of Histone H3R8me2s Antibody. Methylated peptides corresponding to the immunogen and related sites were spotted onto PVDF and probed with the antibody.



Immunofluorescence Data: HEK293T cells stained with Histone H3R8me2s antibody (red) and counterstained with DAPI (blue).

Applications Key: ChIP-Chromatin IP; ChIP-seq: Chromatin IP sequencing; E-ELISA; FACS-Flow cytometry; IF-Immunofluorescence; IHC-Immunohistochemistry; ICC-Immunocytochemistry; IP-Immunoprecipitation; WB-Western Blotting; L-Luminex

Reactivity Key: B-Bovine; Ce-*C. elegans*; Ch-Chicken; Dm-*Drosophila*; Eu-Eukaryote; H-Human; M-Mouse; Ma-Mammal; R-Rat; Sc-*S.cerevisiae*; Sp-*S. pombe*; WR-Wide Range (predicted); X-Xenopus; Z-Zebrafish