

Histone H3 K9Me1 Antibody



EpiCypher™

Catalog No. 13-0014
Lot No. 14247001
Pack Size 100 µg

Type Polyclonal **Host** Rabbit
Mol. Wgt. 15 kDa **Reactivity** H, M, WR
Format Aff. Pur. IgG **Appl.** IF, IHC, IP, WB

Product Description:

Histone H3 is one of the four proteins that are present in the nucleosome, the basic repeating unit subunit of chromatin, consisting of 147 base pairs of DNA wrapped around an octamer of core histone proteins (H2A, H2B, H3 and H4). Methylation of lysine 9 is associated with transcriptional repression and the formation of heterochromatin through the recruitment of K9 methyl-binding proteins that facilitate the compaction of chromatin.

Immunogen:

Synthetic peptide corresponding to a region of human histone H3 monomethylated at lysine 9.

Formulation:

Affinity-purified IgG (1 mg/ml) in PBS, pH 7.3, with 0.02% sodium azide and 50% glycerol.

Storage and Stability:

Stable for 2 years at -20°C from date of receipt.

Application Notes:

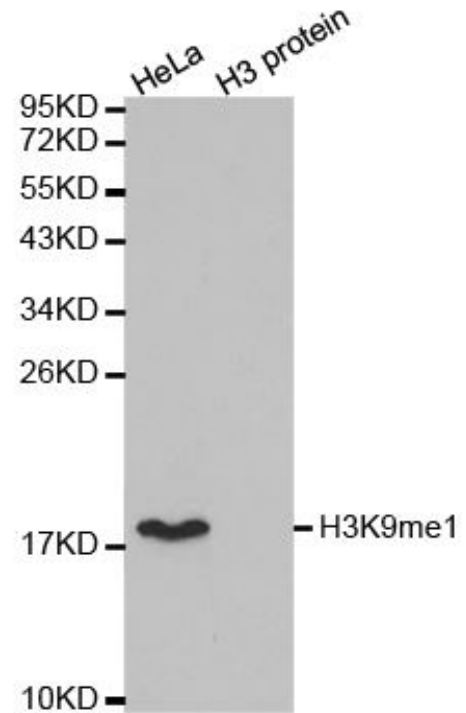
Recommended dilutions:

IF/IHC 1:50 - 1:200
IP 2-5 µg per IP
WB 1:500 - 1:2000

References Using this Product:

Applications Key: ChIP: Chromatin IP; ChIP-seq: Chromatin IP sequencing; E: ELISA; FACS: Flow cytometry; IF: Immunofluorescence; IHC: Immunohistochemistry; IP: Immunoprecipitation; WB: Western Blotting

Reactivity Key: B: Bovine; Ce: *C. elegans*; Ch: Chicken; Dm: *Drosophila*; Eu: Eukaryote; H: Human; M: Mouse; Ma: Mammal; R: Rat; Sc: *S. cerevisiae*; Sp: *S. pombe*; WR: Wide Range (predicted); X: Xenopus; Z: Zebrafish



Western Blot Data: HeLa cell extract (HeLa) and recombinant histone H3 (H3 protein) were blotted onto PVDF and probed with Histone H3 K9Me1 Antibody.

This product is for *in vitro* research use only and is not intended for use in humans or animals.