

Histone H3 R8Me2s Antibody

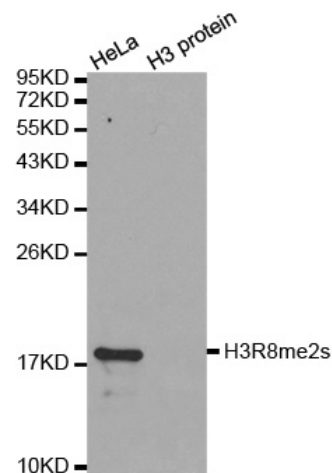
Catalog No. 13-0019
Lot No. 14351001
Pack Size 100 µg

Type Polyclonal **Host** Rabbit
Mol. Wgt. 15 kDa **Reactivity** H, M, WR
Format Aff. Pur. IgG **Appl.** IF, IHC, IP, WB



Product Description:

Histone H3 is one of the four proteins that are present in the nucleosome, the basic repeating unit subunit of chromatin, consisting of 147 base pairs of DNA wrapped around an octamer of core histone proteins (H2A, H2B, H3 and H4). Symmetric dimethylation of arginine 8 by PRMT5 is associated with transcriptional repression and elevated in lymphoid cancer cells.



Western Blot Data: HeLa cell extract (HeLa) and recombinant histone H3 (H3 protein) were blotted onto PVDF and probed with Histone H3 R8Me2s Antibody.

Immunogen:

Synthetic peptide corresponding to a region of human histone H3 symmetrically dimethylated at arginine 8.

Formulation:

Affinity-purified IgG (1 mg/ml) in PBS, pH 7.3, with 0.02% sodium azide and 50% glycerol.

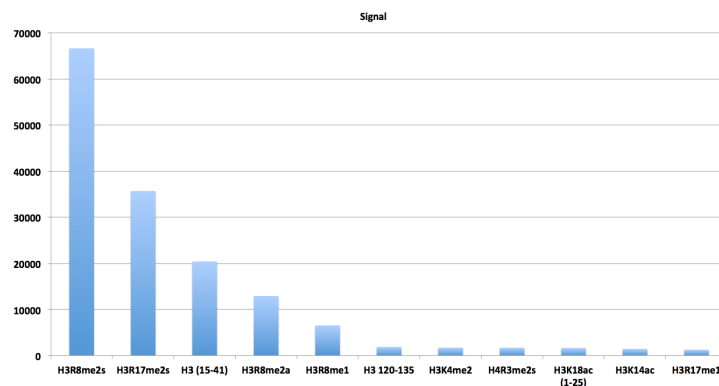
Storage and Stability:

Stable for 2 years at -20°C from date of receipt.

Application Notes:

Recommended dilutions:

IF/IHC 1:50 - 1:200
IP 2-5 µg per IP
WB 1:500 - 1:2,000



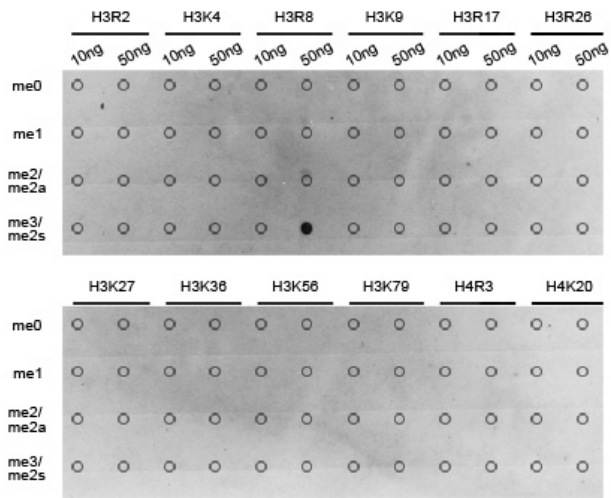
References Using this Product:

Specificity Data-Peptide Array: EpiTitan™ Histone Peptide array used to confirm the specificity of Histone H3 R8Me2s Antibody. Data is shown for the highest reacting single modification peptides.

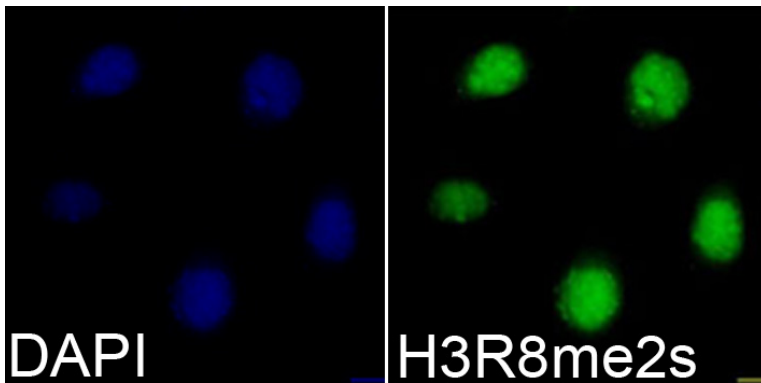
Applications Key: ChIP-Chromatin IP; E-ELISA; FACS-Flow cytometry; IF-Immunofluorescence; IHC-Immunohistochemistry; IP-Immunoprecipitation; WB-Western Blotting

Reactivity Key: B-Bovine; Ce-*C. elegans*; Ch-Chicken; Dm-*Drosophila*; Eu-Eukaryote; H-Human; M-Mouse; Ma-Mammal; R-Rat; Sc-*S.cerevesiae*; Sp-*S. pombe*; WR-Wide Range (predicted); X-Xenopus; Z-Zebrafish

This product is for *in vitro* research use only and is not intended for use in humans or animals.



Specificity Data-Dot Blot: Peptide dot blot used to confirm the specificity of Histone H3 R8Me2s Antibody. Methylated peptides corresponding to the immunogen and related sites were spotted onto PVDF and probed with the antibody.



Immunofluorescence Data: HEK293T cells stained with Histone R8Me2s antibody (red) and counterstained with DAPI (blue).