

Histone H3 R8Me1 Antibody

Catalog No. 13-0017
Lot No. 14351001
Pack Size 100 µg

Type Polyclonal **Host** Rabbit
Mol. Wgt. 15 kDa **Reactivity** H, M, WR
Format Aff. Pur. IgG **Appl.** ChIP, IF, IHC, WB

Product Description:

Histone H3 is one of the four proteins that are present in the nucleosome, the basic repeating unit subunit of chromatin, consisting of 147 base pairs of DNA wrapped around an octamer of core histone proteins (H2A, H2B, H3 and H4). Monomethylation of arginine 8 is catalyzed by PRMT2 and PRMT5.

Immunogen:

Synthetic peptide corresponding to a region of human histone H3 monomethylated at arginine 8.

Formulation:

Affinity-purified IgG (1 mg/ml) in PBS, pH 7.3, with 0.02% sodium azide and 50% glycerol.

Storage and Stability:

Stable for 2 years at -20°C from date of receipt.

Application Notes:

Recommended dilutions:

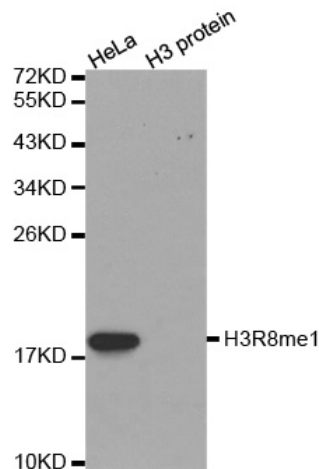
ChIP 2-5 µg per ChIP
IF 1:50 - 1:200
IHC 1:50 - 1:200
WB 1:500 - 1:2,000

References Using this Product:

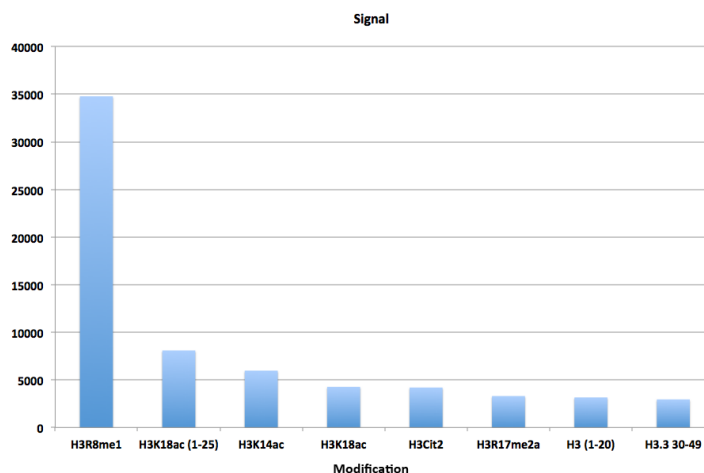
Applications Key: ChIP-Chromatin IP; E-ELISA; FACS-Flow cytometry; IF-Immunofluorescence; IHC-Immunohistochemistry; IP-Immunoprecipitation; WB-Western Blotting

Reactivity Key: B-Bovine; Ce-*C. elegans*; Ch-Chicken; Dm-*Drosophila*; Eu-Eukaryote; H-Human; M-Mouse; Ma-Mammal; R-Rat; Sc-*S.cerevesiae*; Sp-*S. pombe*; WR-Wide Range (predicted); X-Xenopus; Z-Zebrafish

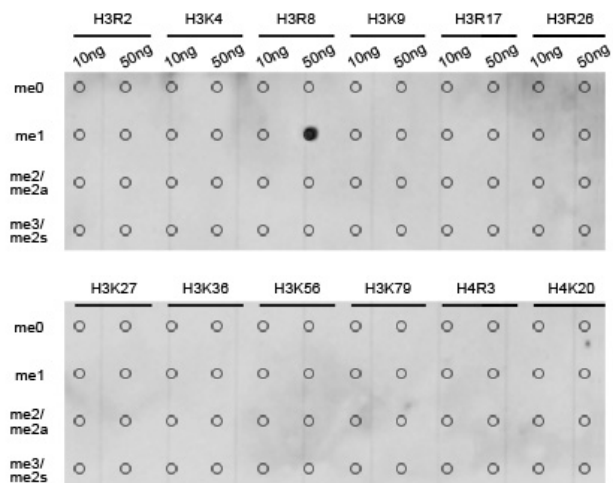
This product is for *in vitro* research use only and is not intended for use in humans or animals.



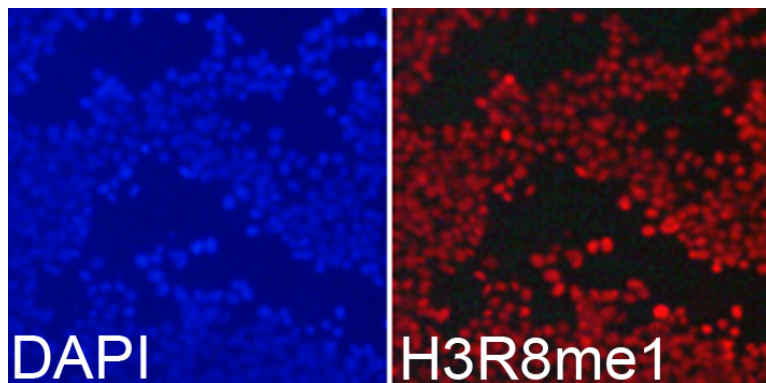
Western Blot Data: HeLa cell extract (HeLa) and recombinant histone H3 (H3 protein) were blotted onto PVDF and probed with Histone H3 R8Me1 Antibody.



Specificity Data-Peptide Array: EpiTitan™ Histone Peptide array used to confirm the specificity of Histone H3 R8Me1 Antibody. Data is shown for the highest reacting single modification or unmodified peptides.



Specificity Data-Dot Blot: Peptide dot blot used to confirm the specificity of Histone H3 R8Me1 Antibody. Methylated peptides corresponding to the immunogen and related sites were spotted onto PVDF and probed with the antibody.



Immunofluorescence Data: HEK293T cells stained with Histone R8Me1 antibody (red) and counterstained with DAPI (blue).