

Histone H3 K27Me1 Antibody

Catalog No. 13-0015
Lot No. 14247001
Pack Size 100 µg

Type Polyclonal **Host** Rabbit
Mol. Wgt. 15 kDa **Reactivity** H, M, WR
Format Aff. Pur. IgG **Appl.** IF, IHC, WB

Product Description:

Histone H3 is one of the four proteins that are present in the nucleosome, the basic repeating unit subunit of chromatin, consisting of 147 base pairs of DNA wrapped around an octamer of core histone proteins (H2A, H2B, H3 and H4). Methylation of lysine 27 is associated with transcriptional repression by the Polycomb complex of proteins and the formation of facultative heterochromatin.

Immunogen:

Synthetic peptide derived from human histone H3 monomethylated at lysine 27.

Formulation:

Affinity-purified IgG (1 mg/ml) in PBS, pH 7.3, with 0.02% sodium azide and 50% glycerol.

Storage and Stability:

Stable for 2 years at -20°C from date of receipt.

Application Notes:

Recommended dilutions:

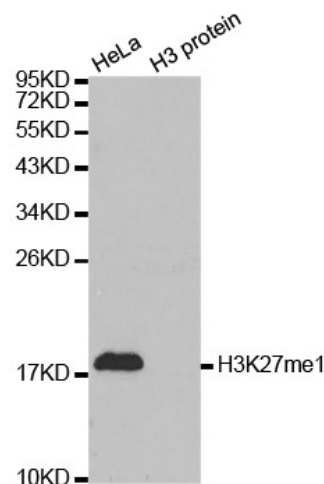
IF/IHC 1:50 - 1:200
WB 1:500 - 1:2000

References Using this Product:

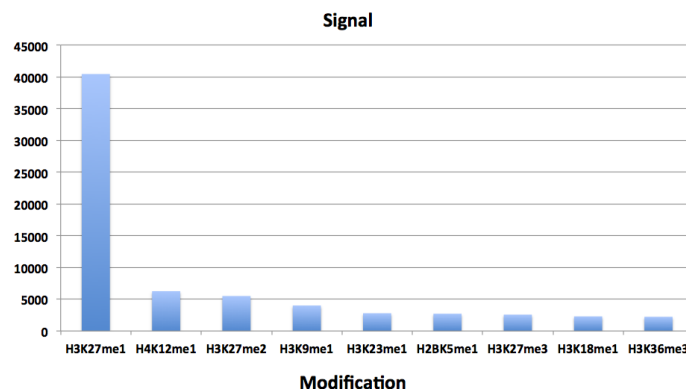
Applications Key: ChIP-Chromatin IP; E-ELISA; FACS-Flow cytometry; IF-Immunofluorescence; IHC-Immunohistochemistry; IP-Immunoprecipitation; WB-Western Blotting

Reactivity Key: B-Bovine; Ce-*C. elegans*; Ch-Chicken; Dm-*Drosophila*; Eu-Eukaryote; H-Human; M-Mouse; Ma-Mammal; R-Rat; Sc-*S.cerevesiae*; Sp-*S. pombe*; WR-Wide Range (predicted); X-Xenopus; Z-Zebrafish

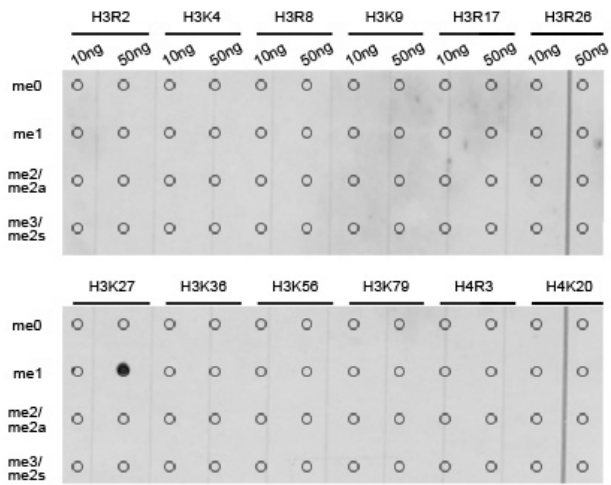
This product is for *in vitro* research use only and is not intended for use in humans or animals.



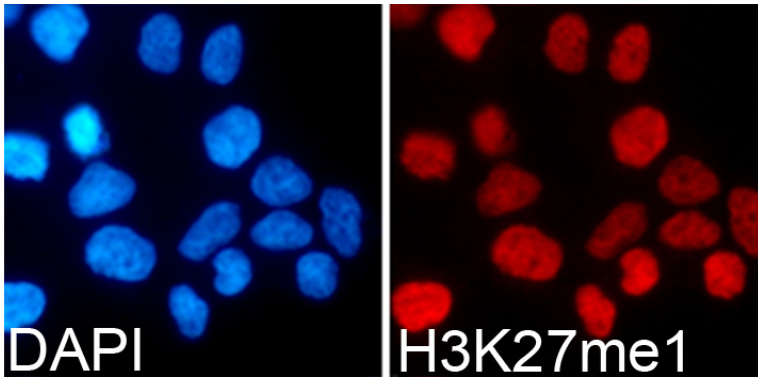
Western Blot Data: HeLa cell extract (HeLa) and recombinant histone H3 (H3 protein) were blotted onto PVDF and probed with Histone H3 K27Me1 Antibody.



Specificity Data-Peptide Array: EpiTitan™ Histone Peptide array used to confirm the specificity of Histone H3 K27Me1 Antibody. Data is shown for the highest reacting single modification peptides.



Specificity Data-Dot Blot: Peptide dot blot used to confirm the specificity of Histone H3 K27Me1 Antibody. Methylated peptides corresponding to the immunogen and related sites were spotted onto PVDF and probed with the antibody.



Immunofluorescence Data: HEK293T cells stained with Histone K27Me1 antibody (red) and counterstained with DAPI (blue).