

Histone H3 K9Me1 Antibody

Catalog No. 13-0014
Lot No. 14247001
Pack Size 100 µg



Type Polyclonal **Host** Rabbit
Mol. Wgt. 15 kDa **Reactivity** H, M, WR
Format Aff. Pur. IgG **Appl.** ChIP, ChIP-seq, IF, IHC, IP, WB

Product Description:

Histone H3 is one of the four proteins that are present in the nucleosome, the basic repeating unit subunit of chromatin, consisting of 147 base pairs of DNA wrapped around an octamer of core histone proteins (H2A, H2B, H3 and H4). Methylation of lysine 9 is associated with transcriptional repression and the formation of heterochromatin through the recruitment of K9 methyl-binding proteins that facilitate the compaction of chromatin.

Immunogen:

Synthetic peptide corresponding to a region of human histone H3 monomethylated at lysine 9.

Formulation:

Affinity-purified IgG (1 mg/ml) in PBS, pH 7.3, with 0.02% sodium azide and 50% glycerol.

Storage and Stability:

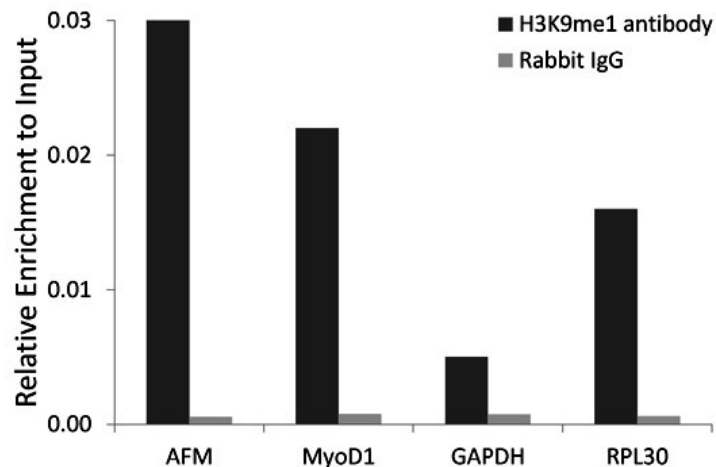
Stable for 2 years at -20°C from date of receipt.

Application Notes:

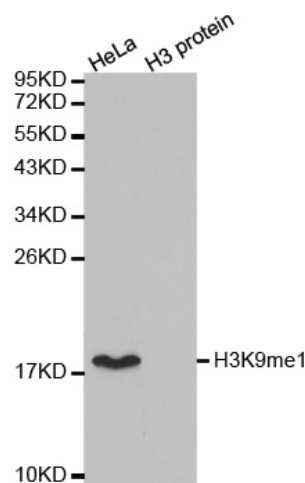
Recommended dilutions:

ChIP 2-5 µg per ChIP
IF/IHC 1:50 - 1:200
IP 2-5 µg per IP
WB 1:500 - 1:2000

References Using this Product:



Chromatin IP Data: Chromatin IP (ChIP) performed on HEK293 cell chromatin using Histone H3 K9Me1 Antibody (black bars) or rabbit IgG (grey bars) as a negative control. Real time, quantitative PCR (RT-qPCR) was performed on DNA purified from each of the ChIP reactions using a primers specific for the gene indicated. Data are presented as ratios relative to input DNA in ChIP chromatin.

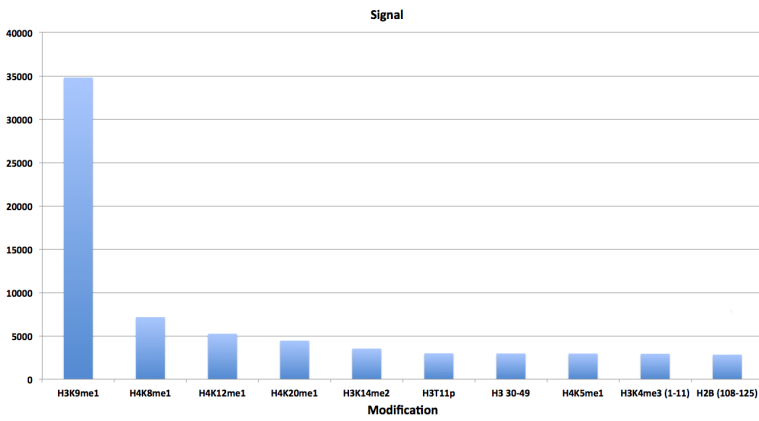


Western Blot Data: HeLa cell extract (HeLa) and recombinant histone H3 (H3 protein) were blotted onto PVDF and probed with Histone H3 K9Me1 Antibody.

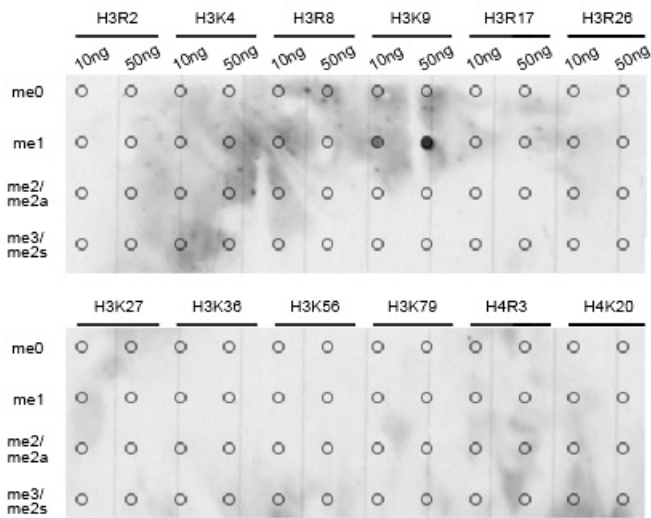
Applications Key: ChIP-Chromatin IP; E-ELISA; FACS-Flow cytometry; IF-Immunofluorescence; IHC-Immunohistochemistry; IP-Immunoprecipitation; WB-Western Blotting

Reactivity Key: B-Bovine; Ce-*C. elegans*; Ch-Chicken; Dm-*Drosophila*; Eu-Eukaryote; H-Human; M-Mouse; Ma-Mammal; R-Rat; Sc-*S.cerevesiae*; Sp-*S. pombe*; WR-Wide Range (predicted); X-Xenopus; Z-Zebrafish

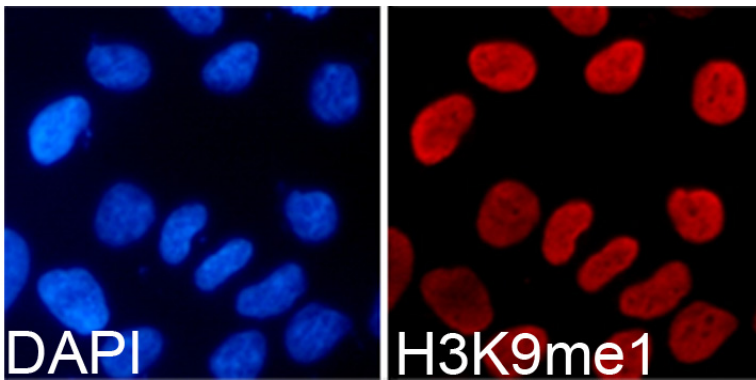
This product is for *in vitro* research use only and is not intended for use in humans or animals.



Specificity Data-Peptide Array: EpiTitan™ Histone Peptide array used to confirm the specificity of Histone H3 K9Me1 Antibody. Data is shown for the highest reacting single modification peptides.



Specificity Data-Dot Blot: Peptide dot blot used to confirm the specificity of Histone H3 K9Me1 Antibody. Methylated peptides corresponding to the immunogen and related sites were spotted onto PVDF and probed with the antibody.



Immunofluorescence Data: HEK293T cells stained with Histone H3 K9Me1 antibody (red) and counterstained with DAPI (blue).