

PRMT1 Antibody

Catalog No. 13-0007
Lot No. 13281001
Pack Size 100 µl

Type Polyclonal **Host** Rabbit
Mol. Wgt. 44 kDa **Reactivity** H, M
Format Serum **Appl.** WB

Product Description:

PRMT1 (protein arginine methyltransferase 1, HMT2, HRMT1L2, IR1B4, accession Q99873) is a type I arginine methyltransferase, an enzyme that catalyzes the formation of monomethylarginine and asymmetric dimethylarginine. PRMT1 is responsible for the majority of arginine methylation in mammals, and its substrates include histones (H4R3), RNA-binding proteins (FUS, HNRNPA1) and DNA damage signaling proteins (MRE11).

Immunogen:

Synthetic peptide corresponding to amino acids 298-318 of human PRMT1, conjugated to KLH.

Formulation:

Rabbit serum with 30% glycerol and 0.035% sodium azide.

Storage and Stability:

Stable for 2 years at -20°C from date of receipt.

Application Notes:

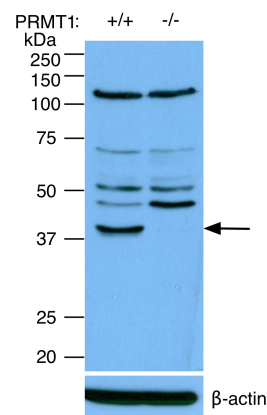
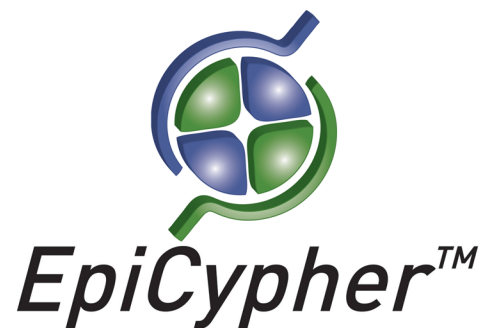
PRMT1 antibody is useful for Western blotting (1:500 - 1:2,000 dilution).

References Using this Product:

Côte J et al (2003). *Mol Biol Cell* 14: 274-287.
Yu Z et al (2009). *Mol Cell Biol* 29: 2982-2996.
Tradewell ML et al (2012). *Hum Mol Genet* 21: 136-149.

Applications Key: ChIP: Chromatin IP; ChIP-seq: Chromatin IP sequencing; E: ELISA; FACS: Flow cytometry; IF: Immunofluorescence; IHC: Immunohistochemistry; IP: Immunoprecipitation; WB: Western Blotting

Reactivity Key: B: Bovine; Ce: *C. elegans*; Ch: Chicken; Dm: *Drosophila*; Eu: Eukaryote; H: Human; M: Mouse; Ma: Mammal; R: Rat; Sc: *S. cerevisiae*; Sp: *S. pombe*; WR: Wide Range (predicted); X: Xenopus; Z: Zebrafish



Western Blot Data: Western blot using PRMT1 Antibody (1:500 dilution) on mouse embryonic fibroblast (MEF) whole cell extract derived from cells with (+/+) or without (-/-) the PRMT1 gene. The band corresponding to the PRMT1 protein (indicated by an arrow) is absent in the PRMT1 null cells. The relative migration positions and molecular weights of protein size standards are indicated, as well as a Western blot recognizing