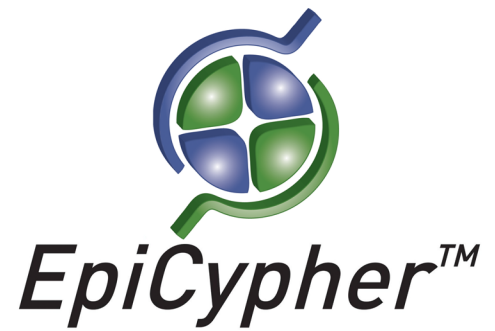


CARM1 / PRMT4 Antibody

Catalog No. 13-0006
Lot No. 13281001
Pack Size 100 µl



Type Polyclonal **Host** Rabbit
Mol. Wgt. 61 kDa **Reactivity** H, M, R
Format Serum **Appl.** WB

Product Description:

CARM1 (Co-activator-associated arginine methyltransferase 1, PRMT4, accession Q86X55) is a type I arginine methyltransferase, an enzyme that catalyzes the formation of monomethylarginine and asymmetric dimethylarginine. Originally identified as a binding partner of the p160 family of nuclear receptor co-activators, CARM1 serves as a cofactor for numerous transcription factors, including p53, NF-κB and MEF2C.

Immunogen:

Synthetic peptide corresponding to amino acids 595-608 of human CARM1, conjugated to KLH.

Formulation:

Rabbit serum with 30% glycerol and 0.035% sodium azide.

Storage and Stability:

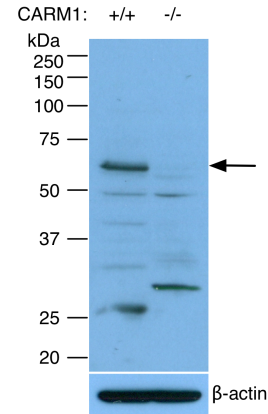
Stable for 2 years at -20°C from date of receipt.

Application Notes:

CARM1 / PRMT4 antibody is useful for Western blotting (1:500 - 1:2,000 dilution).

References Using this Product:

Kim J et al (2004). *J Biol Chem* 279: 25339-25344.
Yu Z et al (2009). *Mol Cell Biol* 29: 2982-2996.



Western Blot Data: Western blot using CARM1 / PRMT4 Antibody (1:500 dilution) on mouse embryonic fibroblast (MEF) whole cell extract derived from cells with (+/+) or without (-/-) the CARM1 / PRMT4 gene. The band corresponding to the CARM1 / PRMT4 protein (indicated by an arrow) is absent in the CARM1 / PRMT4 null cells. The relative migration positions and molecular weights of protein size standards are indicated,

Applications Key: ChIP: Chromatin IP; ChIP-seq: Chromatin IP sequencing; E: ELISA; FACS: Flow cytometry; IF: Immunofluorescence; IHC: Immunohistochemistry; IP: Immunoprecipitation; WB: Western Blotting

Reactivity Key: B: Bovine; Ce: *C. elegans*; Ch: Chicken; Dm: *Drosophila*; Eu: Eukaryote; H: Human; M: Mouse; Ma: Mammal; R: Rat; Sc: *S. cerevisiae*; Sp: *S. pombe*; WR: Wide Range (predicted); X: Xenopus; Z: Zebrafish