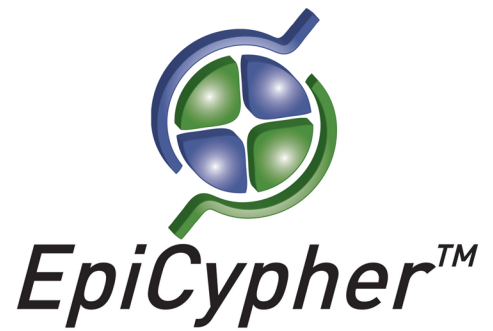


SETD6 Antibody

Catalog No. 13-0003
Lot No. 13059001
Pack Size 100 µg



Type Polyclonal **Host** Rabbit
Mol. Wgt. 53 kDa **Reactivity** Human
Format Aff. Pur. IgG **Appl.** IF, IP, WB

Product Description:

SETD6 is a lysine methyl-transferase that monomethylates the RelA subunit of NF-κB at lysine 310. Methylation of RelA inactivates it, attenuating RelA-dependant transcriptional pathways. SETD6 is downregulated in a diseases of hyper inflammation, and has also been reported to have other nuclear substrates.

Immunogen:

Recombinant protein corresponding to full-length GST-tagged human SETD6 (NP_001153777).

Formulation:

200 µl immunoaffinity purified rabbit IgG at 0.5 mg/ml in PBS, pH7.5, 30% glycerol and 0.035% sodium azide.

Storage and Stability:

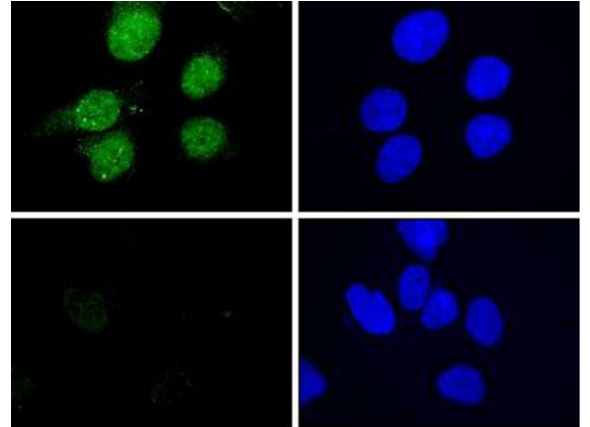
Stable for 2 years at -20°C from date of receipt.

Application Notes:

This SETD6 antibody can be used in immunofluorescence (IF, 1-2 µg/ml), immunoprecipitation (IP, 2-5 µg per IP) and Western blotting (0.2 - 1 µg/ml).

References Using this Product:

Levy D et al (2011). *Nat Immunol* 12: 29-36.



Immunofluorescence Data: IF performed on U2OS cells with SETD6 antibody (Green, left) and counterstained with DAPI (Blue, right). Bottom left: U2OS cells transfected with anti-SETD6 siRNA.

Applications Key: ChIP: Chromatin IP; ChIP-seq: Chromatin IP sequencing; E: ELISA; FACS: Flow cytometry; IF: Immunofluorescence; IHC: Immunohistochemistry; IP: Immunoprecipitation; WB: Western Blotting

Reactivity Key: B: Bovine; Ce: *C. elegans*; Ch: Chicken; Dm: *Drosophila*; Eu: Eukaryote; H: Human; M: Mouse; Ma: Mammal; R: Rat; Sc: *S.cerevesiae*; Sp: *S. pombe*; WR: Wide Range (predicted); X: Xenopus; Z: Zebrafish