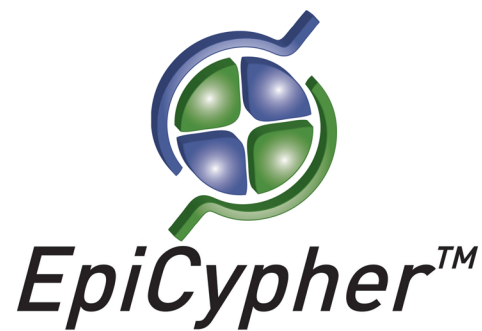


# Histone H4 K20Me1 Peptide, Biotinylated

Catalog No. 12-0036

Lot No. 12285001

Quantity 50 µg



## Product Description:

A synthetic peptide derived from human histone H4, amino acids 11-27, monomethylated at lysine 20. The alpha-amino group on the N-terminus is acetylated, with a C-terminal PEG spacer containing a biotin moiety.

## Formulation:

50 µg of lyophilized powder.

## Sequence:

Ac-GKGGAKRHRK(Me1)VLRDNIQ-Peg(Biot)

## Molecular Weight:

2418 Da

## Purity:

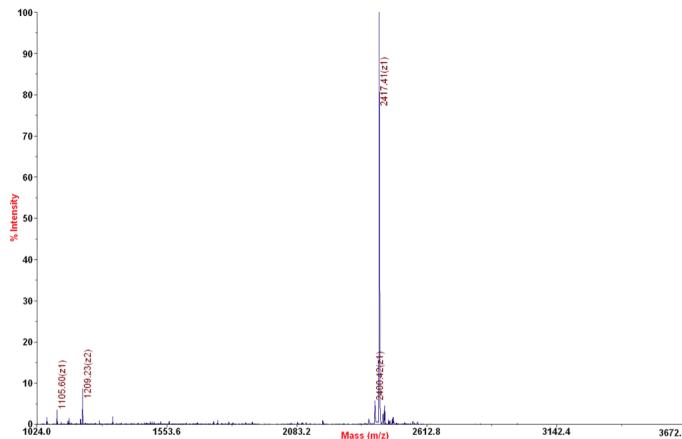
>95% as judged by HPLC and mass spectrometry.

## Storage and Stability:

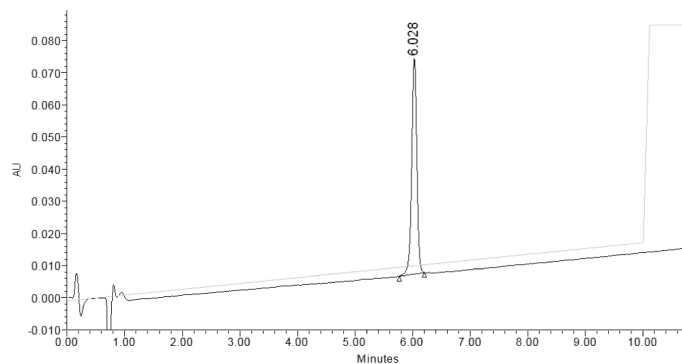
Lyophilized peptides are stable for 2 years at -20°C from date of shipment. Peptides in solution are stable for 6 months at -80°C. Spin vial briefly in microfuge and reconstitute with sterile distilled water and vortex briefly until resuspended. Aliquot peptide to avoid repeated freezing and thawing.

## References:

Fuchs SM et al (2011). *Curr Biol* 21: 53-58.



**Mass Spec Data:** MALDI-TOF mass spectrometry was used to analyze histone H4 K20Me1 peptide for identity and homogeneity.



**HPLC Data:** Reversed phase analytical HPLC chromatogram of purified histone H4 K20Me1 peptide.