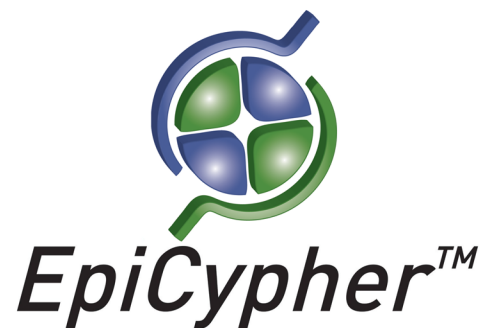


Histone H3 K36Me2 Peptide, Biotinylated

Catalog No. 12-0023

Lot No. 12291001

Quantity 50 µg



Product Description:

A synthetic peptide derived from *S. cerevisiae* histone H3, amino acids 27-45, dimethylated at lysine 36. There are two added glycine residues, an added lysine residue containing a biotin moiety at the epsilon-amino group, and a C-terminal amide group (CONH₂).

Formulation:

50 µg of lyophilized powder.

Sequence:

KSAPSTGGVK(Me₂)KPHRYKPGT-GG-K(Biot)-CONH₂

Molecular Weight:

2492 Da

Purity:

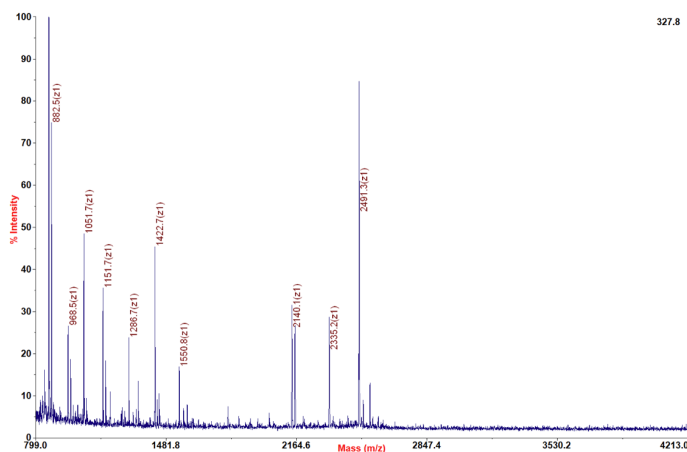
>75% as judged by HPLC and mass spectrometry.

Storage and Stability:

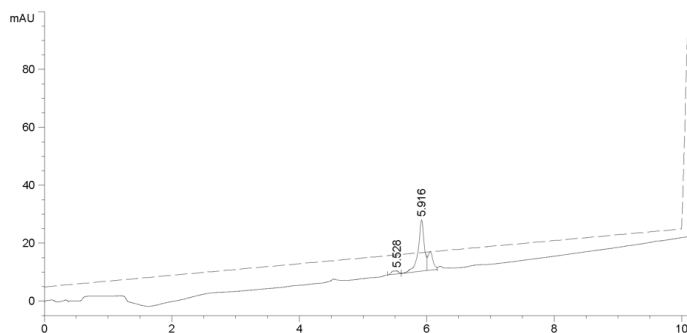
Lyophilized peptides are stable for 2 years at -20°C from date of shipment. Peptides in solution are stable for 6 months at -80°C. Spin vial briefly in microfuge and reconstitute with sterile distilled water and vortex briefly until resuspended. Aliquot peptide to avoid repeated freezing and thawing.

References:

Fuchs SM et al (2011). *Curr Biol* 21: 53-58.



Mass Spec Data: MALDI-TOF mass spectrometry was used to analyze histone H3 K36Me₂ peptide for identity and homogeneity.



HPLC Data: Reversed phase analytical HPLC chromatogram of purified histone H3 K36Me₂ peptide.