

Histone H3 R17Me2a Antibody

Catalog No. 13-0016
Lot No. 14247001
Pack Size 100 µg

Type Polyclonal **Host** Rabbit
Mol. Wgt. 15 kDa **Reactivity** H, M, WR
Format Aff. Pur. IgG **Appl.** IF, IHC, IP, WB



Product Description:

Histone H3 is one of the four proteins that are present in the nucleosome, the basic repeating unit subunit of chromatin, consisting of 147 base pairs of DNA wrapped around an octamer of core histone proteins (H2A, H2B, H3 and H4). Methylation of arginine 17 by CARM1/PRMT4 is associated with increased levels of transcription, for example in response to steroid hormone receptor-mediated transcriptional activation.

Immunogen:

Synthetic peptide corresponding to a region of human histone H3 asymmetrically dimethylated at arginine 17.

Formulation:

Affinity-purified IgG (1 mg/ml) in PBS, pH 7.3, with 0.02% sodium azide and 50% glycerol.

Storage and Stability:

Stable for 2 years at -20°C from date of receipt.

Application Notes:

Recommended dilutions:

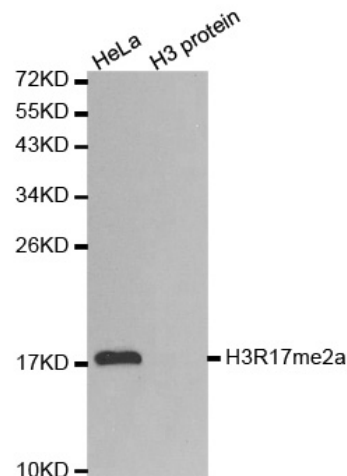
IF/IHC 1:50 - 1:200
IP 2-5 µg per IP
WB 1:500 - 1:2000

References Using this Product:

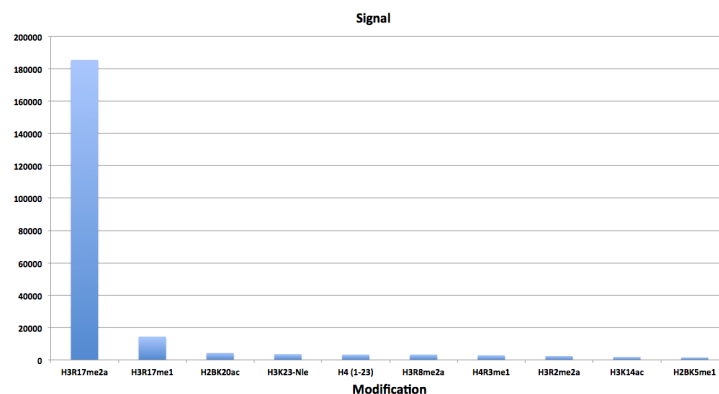
Applications Key: ChIP-Chromatin IP; E-ELISA; FACS-Flow cytometry; IF-Immunofluorescence; IHC-Immunohistochemistry; IP-Immunoprecipitation; WB-Western Blotting

Reactivity Key: B-Bovine; Ce-*C. elegans*; Ch-Chicken; Dm-*Drosophila*; Eu-Eukaryote; H-Human; M-Mouse; Ma-Mammal; R-Rat; Sc-*S.cerevesiae*; Sp-*S. pombe*; WR-Wide Range (predicted); X-Xenopus; Z-Zebrafish

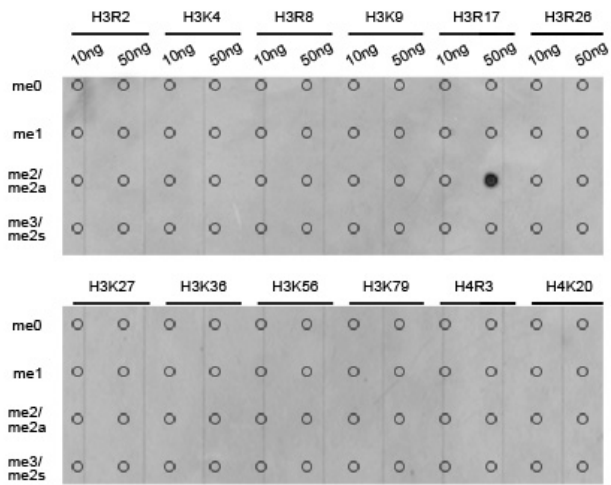
This product is for *in vitro* research use only and is not intended for use in humans or animals.



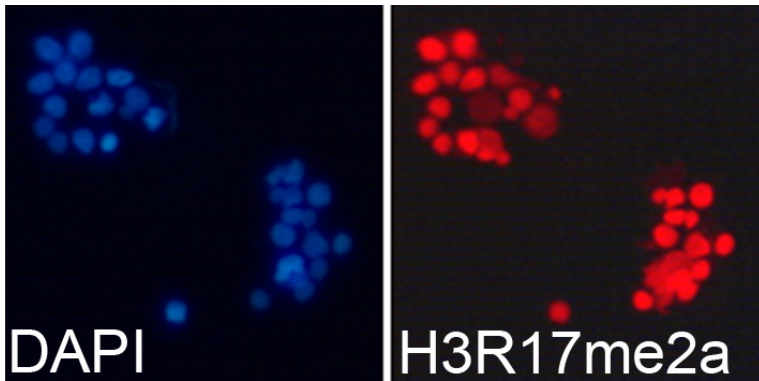
Western Blot Data: HeLa cell extract (HeLa) and recombinant histone H3 (H3 protein) were blotted onto PVDF and probed with Histone H3 R17Me2a Antibody.



Specificity Data-Peptide Array: EpiTitan™ Histone Peptide array used to confirm the specificity of Histone H3 R17Me2a Antibody. Data is shown for the highest reacting single modification peptides.



Specificity Data-Dot Blot: Peptide dot blot used to confirm the specificity of Histone H3 R17Me2a Antibody. Methylated peptides corresponding to the immunogen and related sites were spotted onto PVDF and probed with the antibody.



Immunofluorescence Data: HEK293T cells stained with Histone R17Me2a antibody (red) and counterstained with DAPI (blue).